



wanda the witch



Paint the outside of the pot with a layer of black paint and allow to dry.

This will take approximately one hour.

1



2



Twist your white and red chenille sticks together to form the witch's legs. Cut a black chenille stick in half, to form the arms. Lay the arm section on top of the pot.

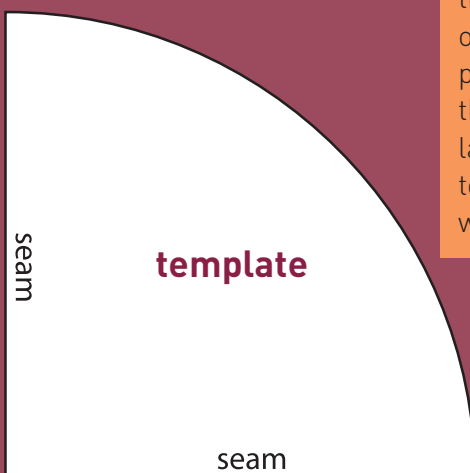
Push the 2 legs feet first through the hole in the top of the pot. When the legs are pulled down they will hold the arms in place. Put a large dab of craft glue on top of this and push the wooden head into the glue.

Attach the eyes nose and hair using craft glue. Trace around the pot to make the brim shape of the hat, trace the pointed part of the hat from the template on this page and cut out. Glue the pointed part of the hat along its seam. Glue the

3



brim of the hat onto her head. Glue the pointed part of the hat onto the brim. Push the hand and feet beads onto her legs arms to finish.



template

correction

New template on left.